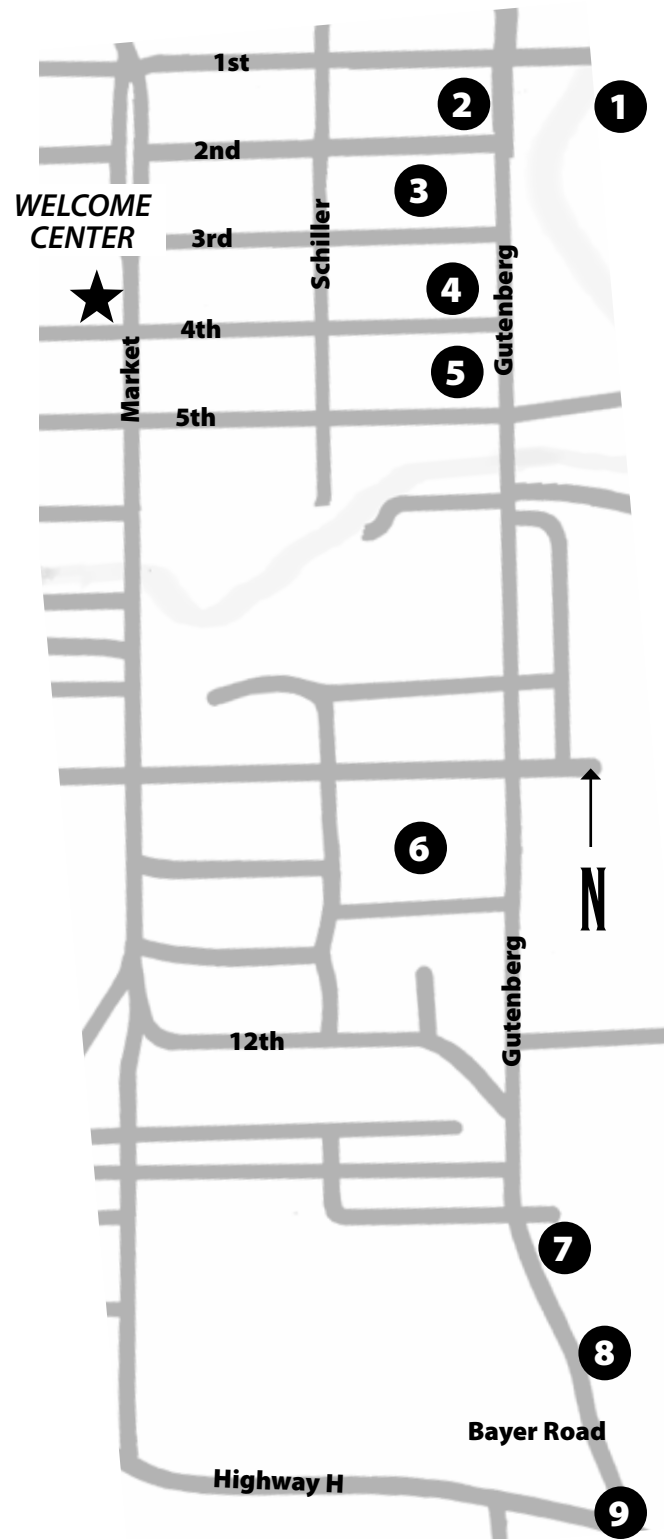
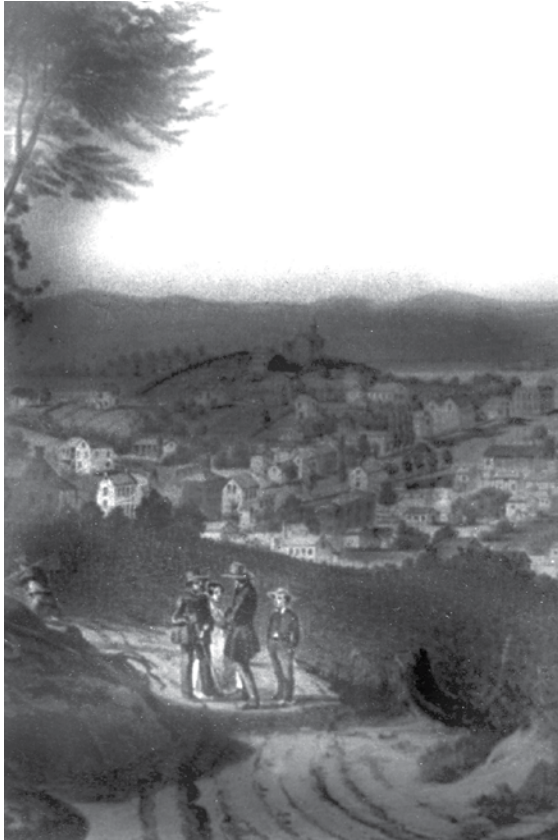


Bayer Walking Tour

This self-guided tour follows a straight path uphill from Hermannhof Winery to Highway H. Along with beautiful scenery, you will see glimpses of Hermann's past... and its future, as well.



HERMANN
**Bayer
Walking
Tour**

573.486.2744 | 800.932.8687
www.VisitHermann.com

HERMANN
VINTAGE CHARM TIMELESS BEAUTY

Hermann Welcome Center
312 Market • Hermann, MO 65041
tourism@centurytel.net

Hermann's history is full of captivating tales.

One of the most stirring is that of George Bayer, one of the founders of our town.

Hermann was founded in 1836 by the German Settlement Society of Philadelphia. In an attempt to preserve their German culture, the society dispatched scouts to Missouri to find land suitable for a colony that would be "German in every particular." When the scouts returned to Philadelphia with news of what they had found, the society commissioned George Bayer to return to Missouri and buy land.



Bayer purchased more than 11,000 acres, the northern border of which was the Missouri River. The first group of settlers reached Hermann in December of 1837 without Bayer, who had been detained in Pittsburg by illness. This made things difficult, since Bayer was the only person authorized to assign lots to settlers. The winter was harsh, and the Germans had to rely on earlier pioneers to survive.

When Bayer and more settlers arrived in Hermann in the spring of 1838, he faced some very unhappy inhabitants. Things only got worse. Bayer was put in charge of supplying food for all the settlers, having sawmills and gristmills built, surveying all the land, assigning property to the colonists, building a school, and teaching at the school. Needless to say, he had a lot on his plate.

The society lost all confidence in Bayer when they realized he was not completing all of the jobs assigned to him. He was released from all duties except teaching and shunned by the rest of the town. Bayer died in March of 1839, some say of a broken heart. He was buried in a remote section of the cemetery on East Hill.

➔ *Park near Hermannhof Winery to start your journey.*

1. Hermannhof Winery

This popular winery, constructed between 1848 and 1852 in the French section of Hermann, was originally a brewing company that dabbled in winemaking. An abundance of the Hermann wine produced around the turn of the 20th century was made by small wine growers. Hermannhof allowed these growers to use its equipment. The winery is open from 10:00 to 5:00 p.m., Monday through Saturday, and from 11:00 to 5:00 on Sunday. The Hofgarten at the corner of Gutenberg and First Streets is the site of many events sponsored by the Dierberg Educational Foundation.

➔ *Head south on Gutenberg Street.*

2. Tin Mill Brewery

Before Prohibition, breweries and taverns were common features of Hermann. Established in 2005, Tin Mill Brewery is the first commercial brewery in Hermann since Prohibition. Tin Mill brews its beer with barley and hops imported from Germany, in accordance with the German Purity Law of 1516. Hours are 11:00 to 5:00, Monday through Thursday; 11:00 to 6:00 Friday and Saturday; and noon to 5:00 on Sunday.

3. Sesquicentennial Park

This park was dedicated in 1986 as part of Hermann's 150th anniversary celebration. During the event, a court of inquiry exonerated George Bayer, finding that the tasks assigned to him would have been impossible to carry out. This park is often used for many of Hermann's festivals.

4. Hermann Farm Stable and Wagon Works

The Hermann Farm Stable at the corner of Fourth and Gutenberg houses a collection of early horse-drawn conveyances. The nearby Wagon Works features blacksmith's tools and the tools of early tinsmith A.E. Dietzel.

5. Clara Eitmann Messmer Amphitheatre

Dedicated May 31, 2006, this amphitheatre was donated by Clara Messmer, a retired school teacher who loved listening to local bands. The amphitheatre was a wonderful gift to Hermann that will bring entertainment and fun to the community for years to come.

➔ *From the amphitheatre, cross the one-lane bridge and head up the hill. This is not for the faint of heart!*

Imagine what this view would have been like around the turn of the 20th century. In the late 1800s, town fathers offered \$50 "grape lots" to anyone interested in planting vineyards. Many residents took part in the program, planting vineyards up and down the hills of Hermann. Today, you can still see grapevines scattered throughout the landscape.

6. City Cemetery

There are many points of interest in Hermann's Cemetery:

George Bayer's Grave: Even in death, George Bayer was shunned by the community he helped create. He was buried facing away from the town, and it was declared that nobody could be buried within 75 feet of his grave, which is near the southeast corner of the cemetery, on the other side of the mausoleum.

Big Hatchie Memorial: The Big Hatchie Steamboat was moored at the Hermann wharf in 1842 when an explosion occurred. It is believed the disaster claimed a total of 70 lives. Thirty-five of the victims are buried here in unmarked graves. Many others perished in the Missouri River, and their bodies were never recovered. The Leimer Hotel, which is still on Wharf Street, was converted into a hospital to deal with the disaster.

➔ *As you return to the main road, pause to enjoy views of the hills of Hermann, which was voted Missouri's most beautiful town by readers of Rural Missouri Magazine.*

7. 1312 Gutenberg

This home was built in 1870 by Julius Hundhausen. After fighting in the Mexican War, Hundhausen returned to Hermann. He went into innkeeping, produced wine, and served as a notary public. In 1870 Hundhausen was elected circuit clerk and recorder of deeds. By 1880 he had given up all of his careers to devote himself to winemaking. Beneath this house is a vaulted wine cellar, which Hundhausen had built.

➔ *Continue south a short distance. Gutenberg will become Bayer Road and bring you to the next stop.*

8. Stone Haus

107 Bayer Road

On your left you will see the Stone Haus B&B, which was built by two brothers, John and William Michels. The Michels came to Missouri from Prussia in the late 1840s. Both men worked as day laborers, but they also started a vineyard on their property. There are two buildings associated with winemaking at Stone Haus, and both are on the National Register of Historic Places. Stone Haus is now a bed and breakfast, but it still has the wine cellar used by the Michels.

9. Old Catholic Cemetery

Your last stop on this tour is the old Catholic Cemetery near the intersection of Highway H and Bayer Road. A giant cross was erected to honor all those buried here. Although there are no markers remaining for individual graves, a list of those buried on this site is on file at the Gasconade County Archives Building. This cemetery was part of St. George Parish, started in 1844. The earliest burial here dates back to 1848. In 1854, the Missouri Pacific Railroad was built through Hermann. Many railroad workers who died from an outbreak of cholera are buried here.

➔ *Enjoy the sights and sounds of Hermann as you head back downhill toward your starting point.*